

# Baroque Bassoon Chart

## System Template

---

Author:  
George Bailey





# Baroque Bassoon Chart

Instrument:

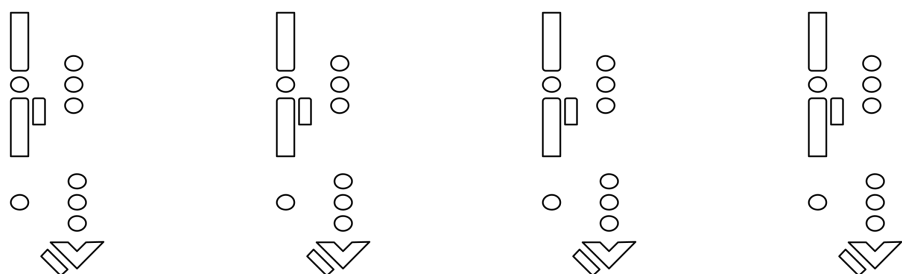
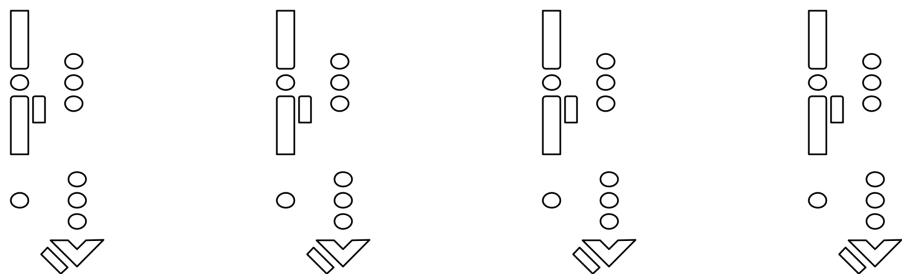
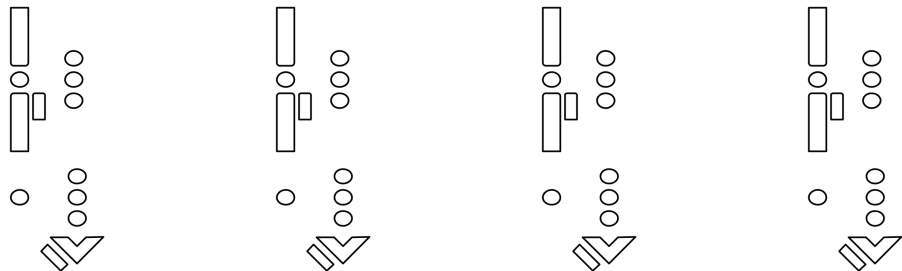
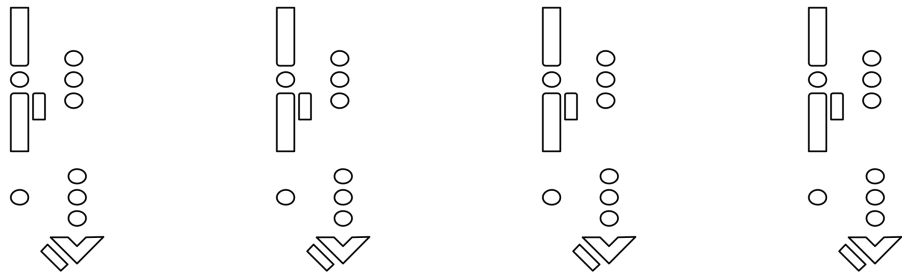
The chart displays four systems of musical notation for the Baroque Bassoon, each consisting of a staff with a key signature and a corresponding fingering diagram. The systems are arranged vertically.

- System 1:** Staff with a bass clef and a key signature of one flat (Bb). The fingering diagram shows the left hand with fingers 1-4 on keys 1-4, and the right hand with fingers 1-4 on keys 1-4. The right hand also has a thumb position on the right side of the instrument.
- System 2:** Staff with a bass clef and a key signature of two flats (Bb, Eb). The fingering diagram shows the left hand with fingers 1-4 on keys 1-4, and the right hand with fingers 1-4 on keys 1-4. The right hand also has a thumb position on the right side of the instrument.
- System 3:** Staff with a bass clef and a key signature of three flats (Bb, Eb, Ab). The fingering diagram shows the left hand with fingers 1-4 on keys 1-4, and the right hand with fingers 1-4 on keys 1-4. The right hand also has a thumb position on the right side of the instrument.
- System 4:** Staff with a bass clef and a key signature of four flats (Bb, Eb, Ab, Db). The fingering diagram shows the left hand with fingers 1-4 on keys 1-4, and the right hand with fingers 1-4 on keys 1-4. The right hand also has a thumb position on the right side of the instrument.



# Baroque Bassoon Chart

Instrument:





# Baroque Bassoon Chart

Instrument:

The chart displays two staves of musical notation for the Baroque Bassoon. The top staff contains four measures, each with a single note (B-flat) and a corresponding fingering diagram. The bottom staff contains three measures, each with a single note (B-flat) and a corresponding fingering diagram. The fingering diagrams are arranged in a grid, showing the placement of fingers on the keys and the position of the thumb and index finger on the instrument.

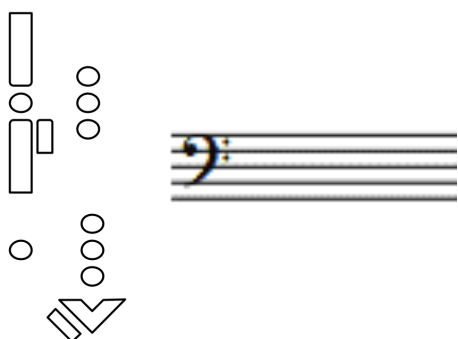
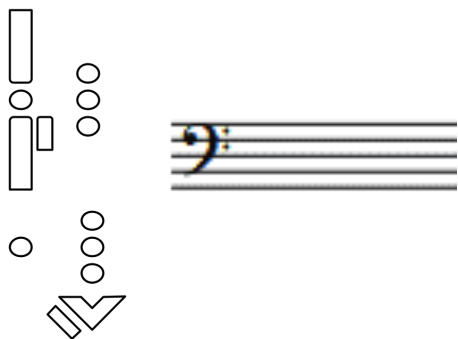
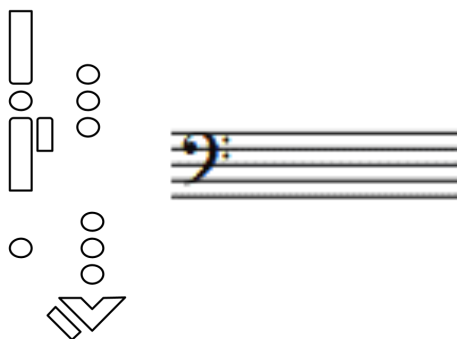
Measure	Staff	Note	Fingering Diagram
1	Top	B-flat	Diagram 1
2	Top	B-flat	Diagram 2
3	Top	B-flat	Diagram 3
4	Top	B-flat	Diagram 4
1	Bottom	B-flat	Diagram 5
2	Bottom	B-flat	Diagram 6
3	Bottom	B-flat	Diagram 7



# Baroque Bassoon Chart

Instrument:

## Alternative fingerings

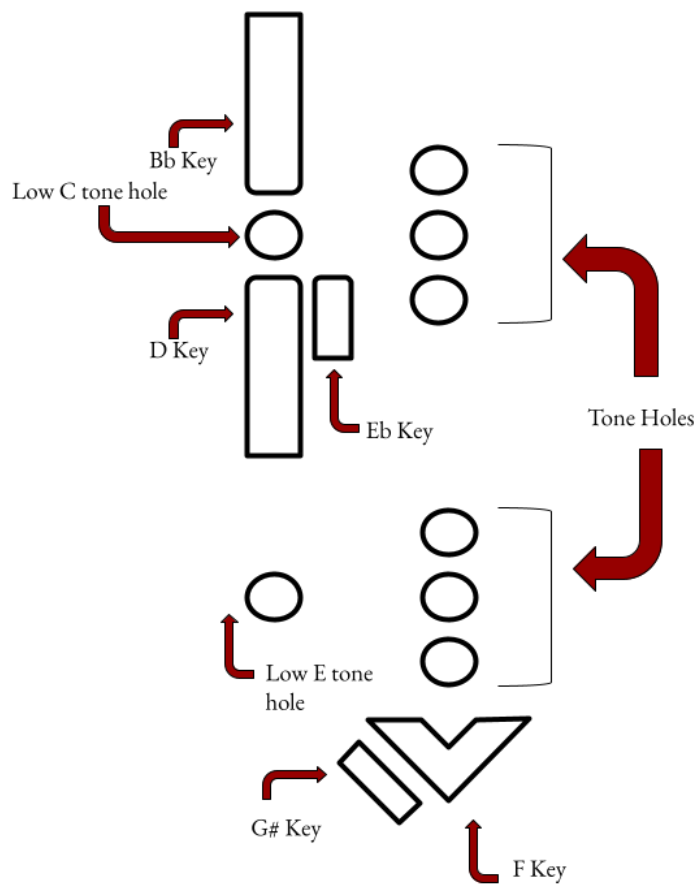




# Baroque Bassoon Chart

Instrument:

## Labelled System:



\*Note that this is a generalised system and that your Baroque Bassoon may contain more or fewer keys than the diagram above